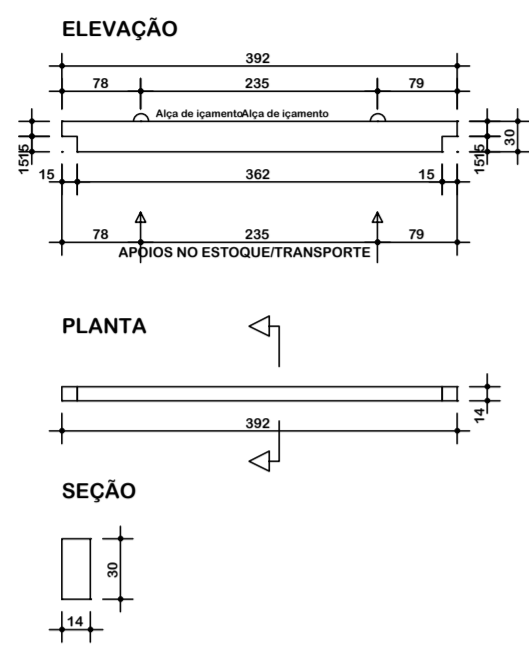
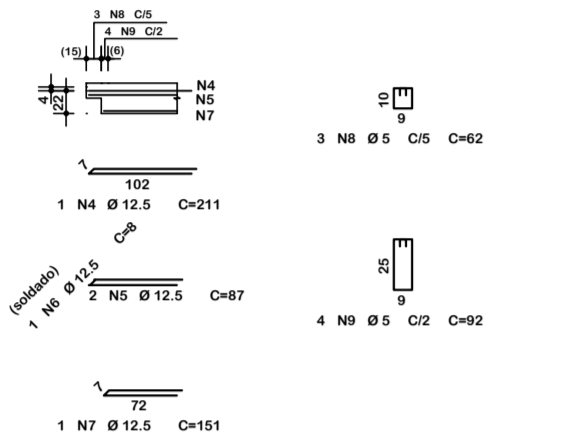


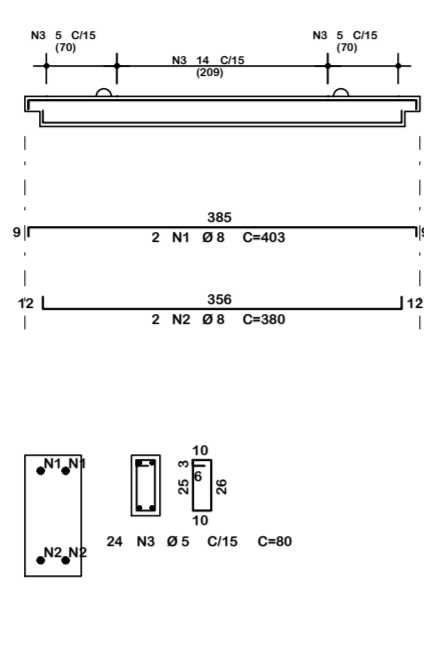
VP2-a



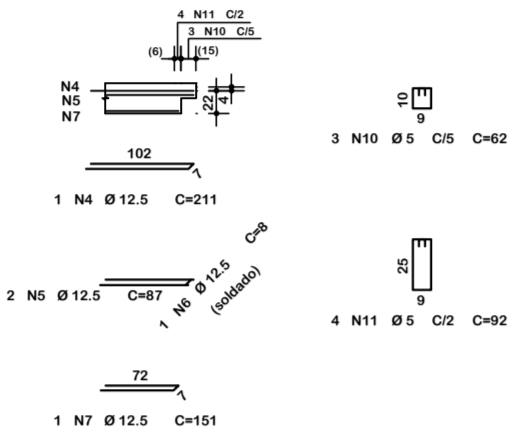
DETALHE INICIAL



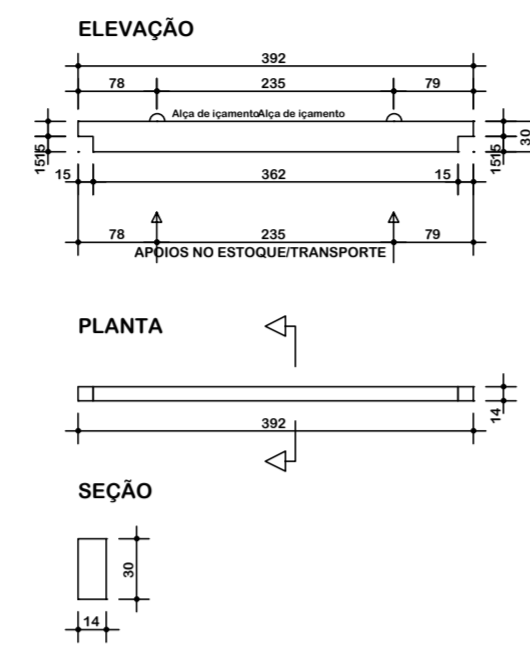
VP2-a



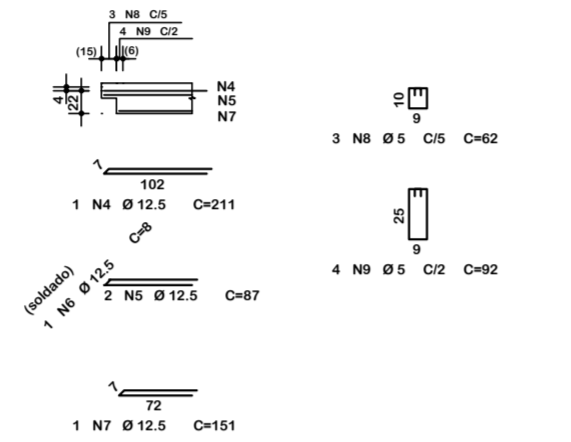
DETALHE FINAL



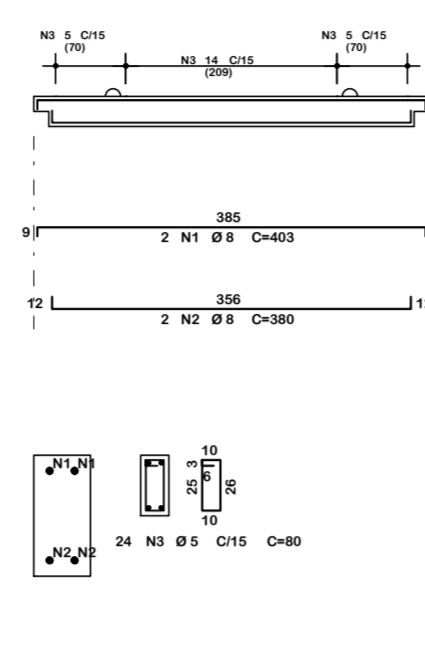
VP2-b



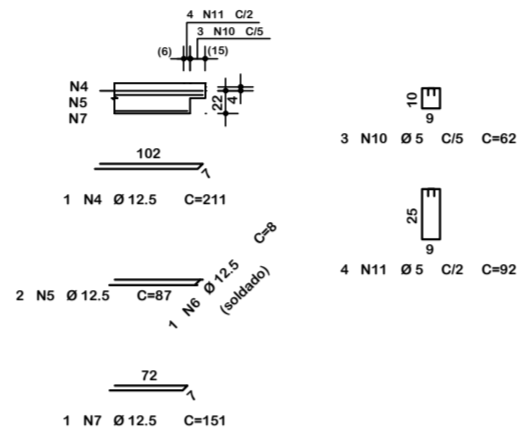
DETALHE INICIAL



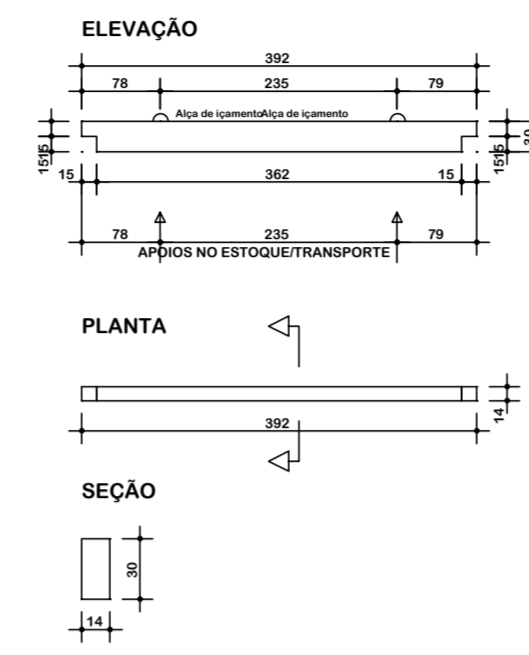
VP2-b



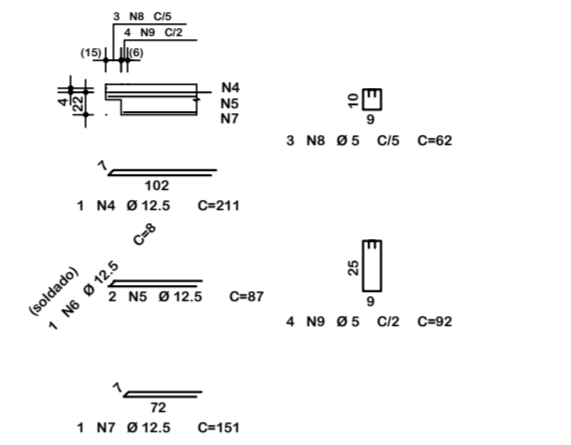
DETALHE FINAL



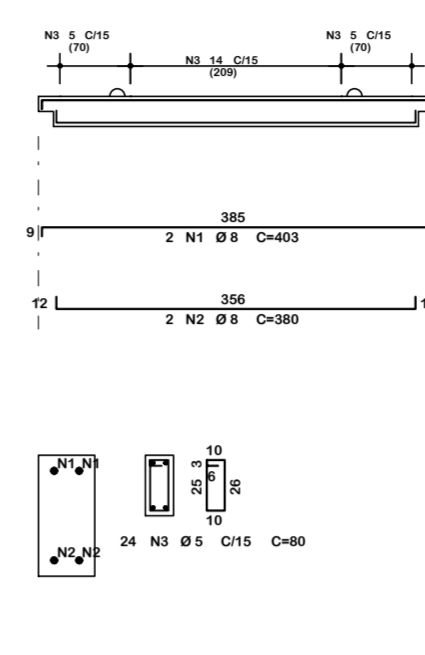
VP2-c



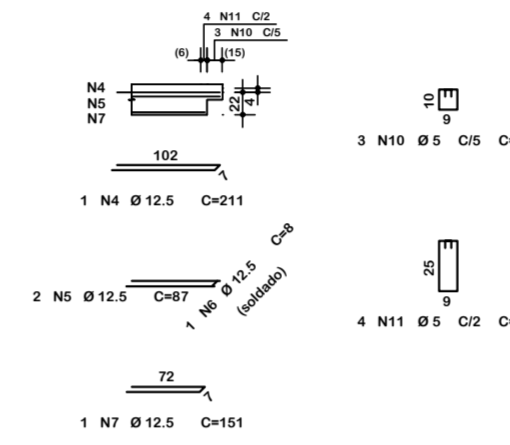
DETALHE INICIAL



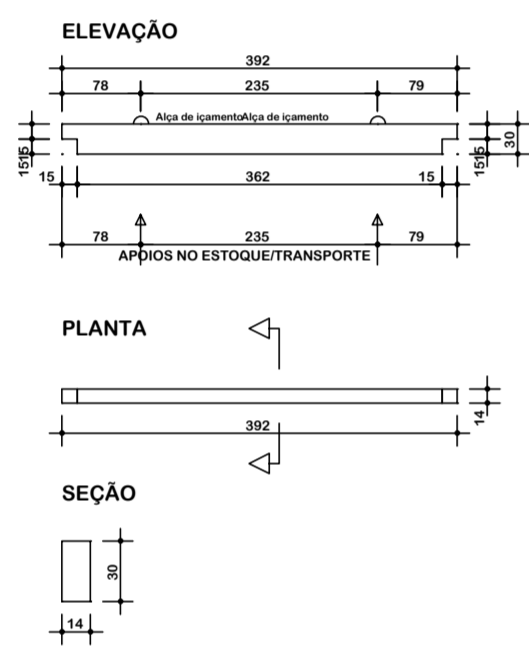
VP2-c



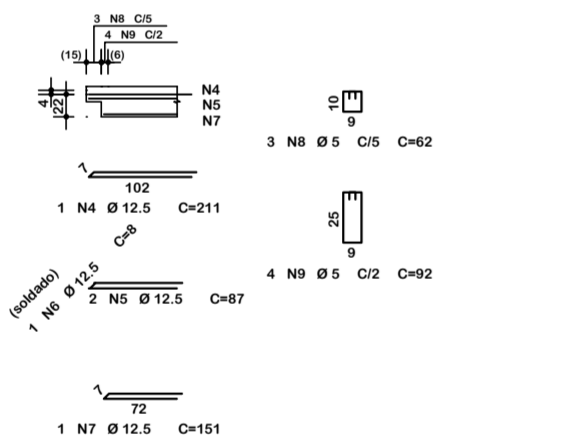
DETALHE FINAL



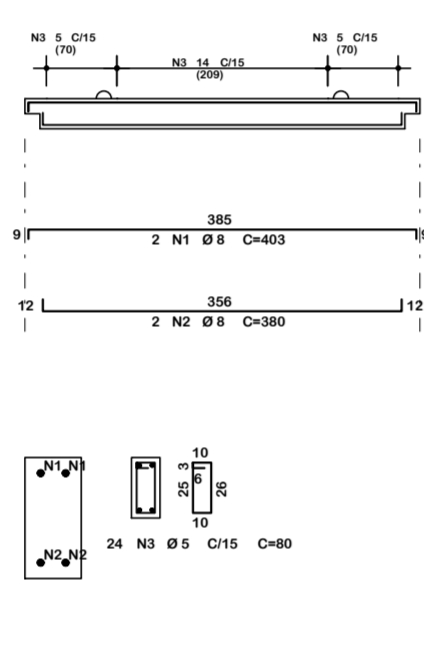
VP2-d



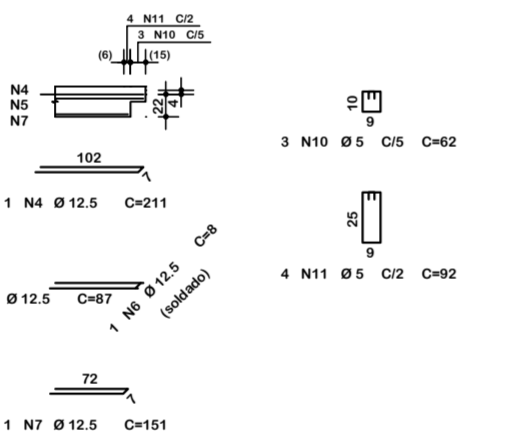
DETALHE INICIAL



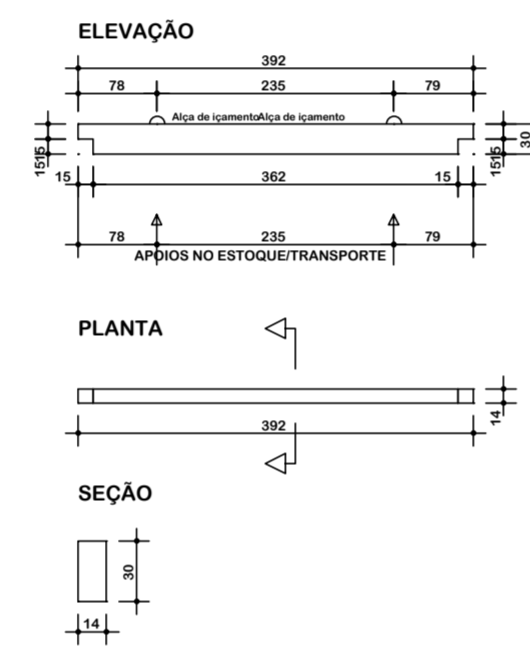
VP2-d



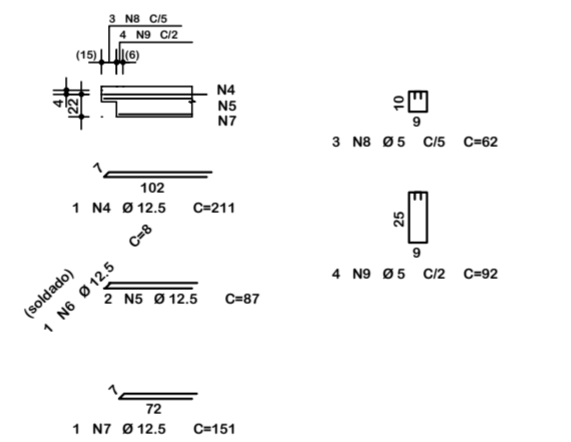
DETALHE FINAL



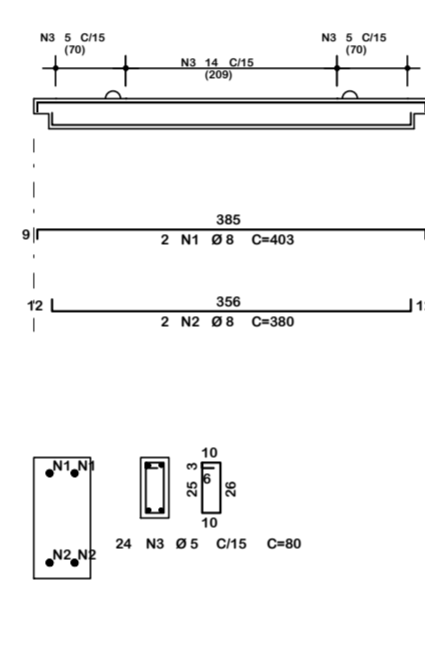
VP2-e



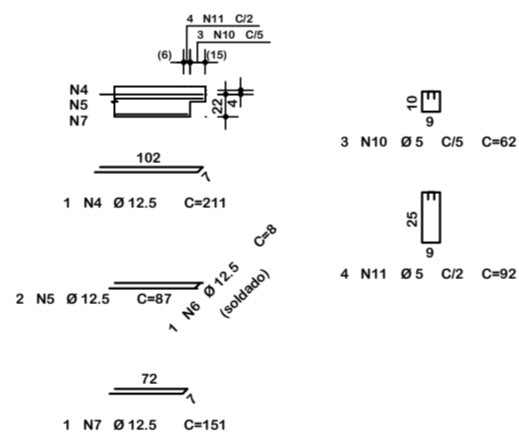
DETALHE INICIAL



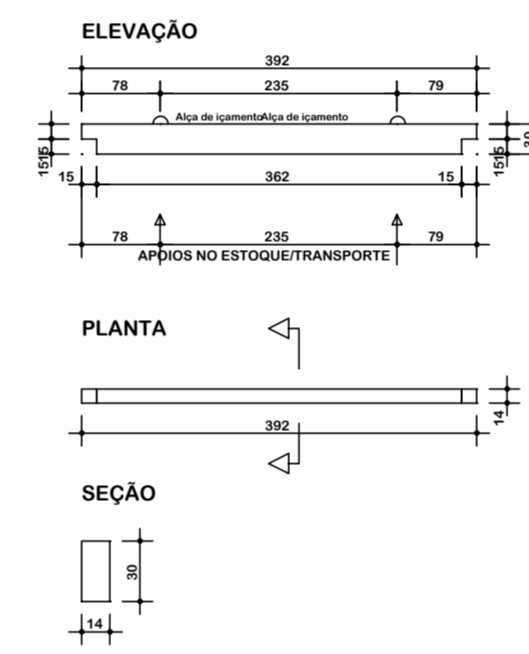
VP2-e



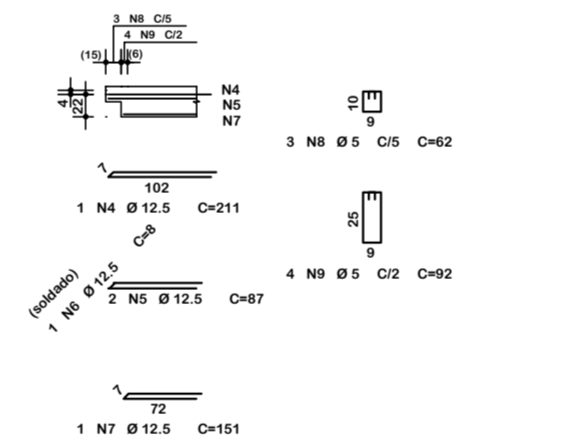
DETALHE FINAL



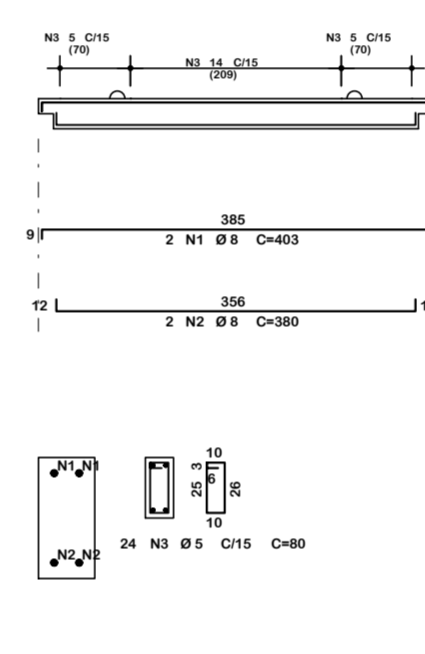
VP2-f



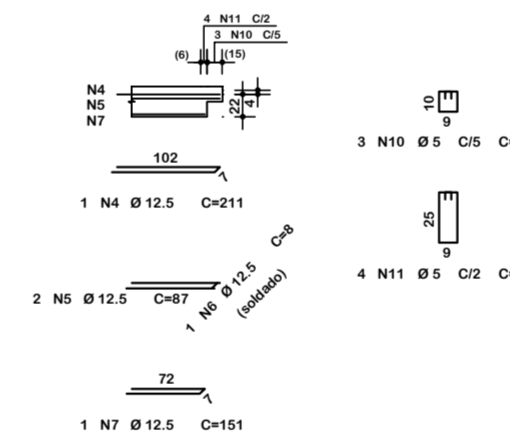
DETALHE INICIAL



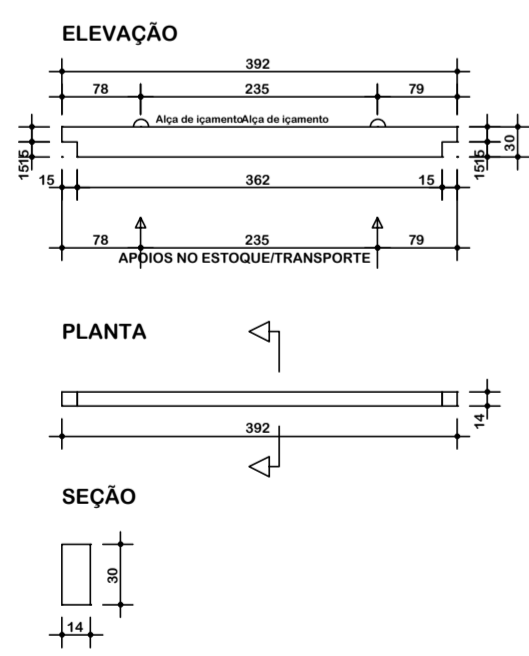
VP2-f



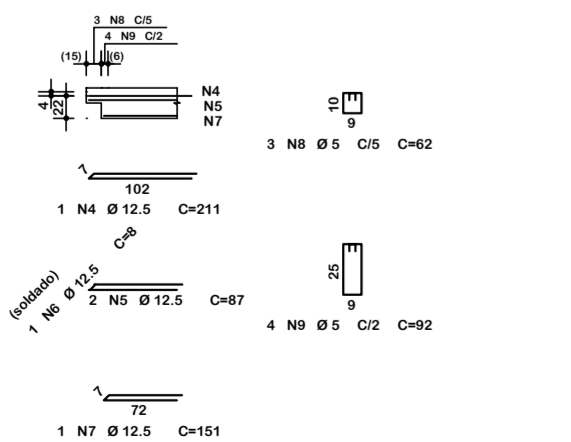
DETALHE FINAL



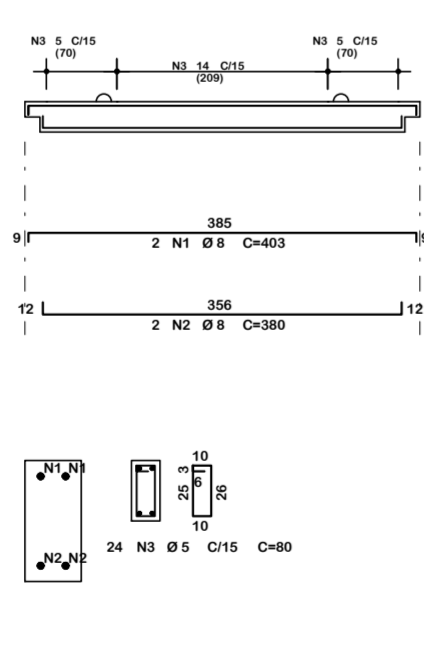
VP2-g



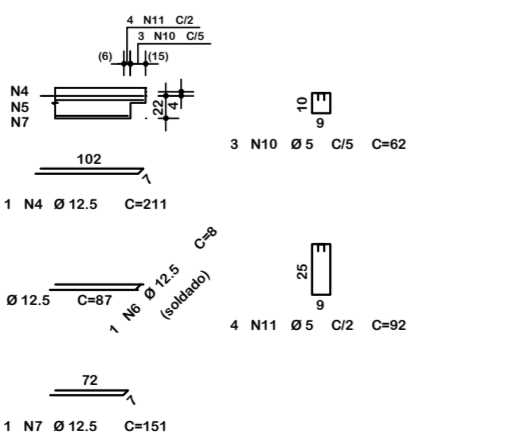
DETALHE INICIAL



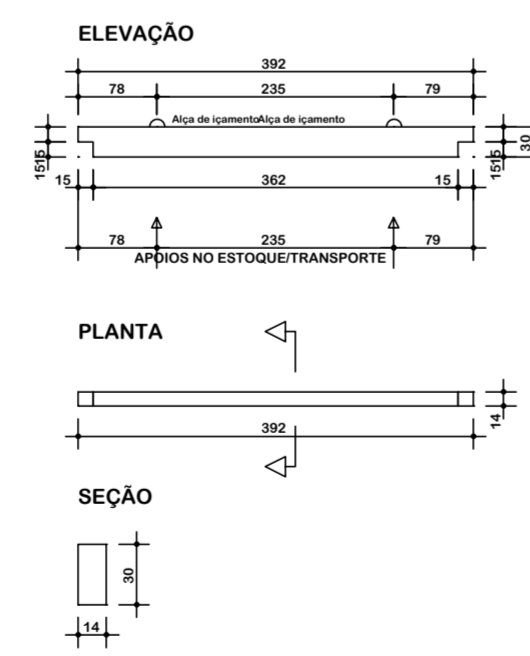
VP2-g



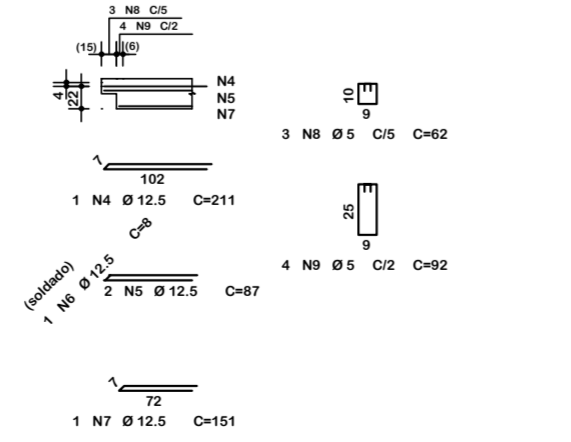
DETALHE FINAL



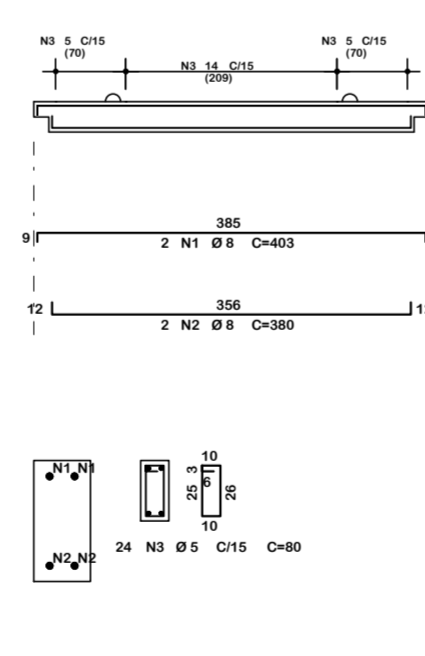
VP2-h



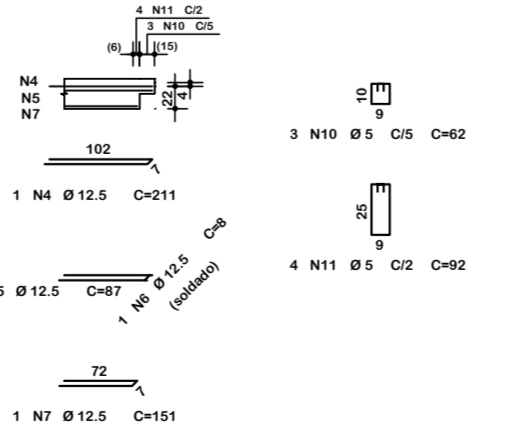
DETALHE INICIAL



VP2-h



DETALHE FINAL



Notas Gerais

Materiais:

- Aço.....: CA50 e CA60
- Concreto Estrutura.....: 25 MPa (250 kgf/cm²)
- Concreto Sapatas.....: 25 MPa (250 kgf/cm²)

Recobrimentos:

- Vigas.....: 2.5cm
- Pilares.....: 2.5cm
- Lajes.....: 2.0cm
- Sapatas.....: 5.0cm
- Deve ser mantido o escoramento por no mínimo por 21 dias
- Só poderão ser executadas paredes após 28 dias da concretagem
- Deve ser utilizado espaçadores plásticos para garantir o recobrimento dos elementos
- Todas as cotas em centímetros, exceto cotas de níveis que estão em metros

		ASSOCIAÇÃO DOS MUNICÍPIOS DO ENTRE RIOS-SC BOM JESUS DO OESTE-CABI-CAMPO ERÉ-CUNHA PORÁ-CUNHATAI-FLOR DO SERTÃO IRACEMINHA-MARAVILHA-MODELO-PALMITOS-RIQUEZA-ROSELÂNDIA-SALTINHO SANTA TEREZINHA DO PROGRESSO-SÃO MIGUEL DA BOA VISTA-SAUADES-TIGRINHOS	
		ENDEREÇO: Av. Euclides da Cunha, 160 - Cx. P. 47 - Centro 89.874-000 - MARAVILHA - Santa Catarina Fone/Fax: (0*49) 3664-0282- e-mail:amerios@amerios.org.br CNPJ 00.961.206/0001-88	
		MUNICÍPIO DE BOM JESUS DO OESTE / SC	
		OBRA: PROJETO ESTRUTURAL AMPLIAÇÃO DA ESCOLA MUNICIPAL PROFESSOR ALBANO BORRE - ANOS INICIAIS DO ENSINO FUNDAMENTAL -GARAGEM DE ÔNIBUS	
RESPONSÁVEL TÉCNICO: RAFAEL CASSOL BASSO ENGENHEIRO CIVIL CREA / SC. 112.213-2		ASS. RESP. TÉCNICO:	
ESPECIFICAÇÕES: DETALHAMENTO: VIGAS DE COBERTURA			
PROPRIETÁRIO: MUNICÍPIO DE BOM JESUS DO OESTE/SC		ASS. DO PREFEITO: AIRTON ANTONIO REINEHR	
LOCAL: RUA AFONSO RAYMUNDO WALKER, 189 - CENTRO		FOLHA: 22/43	
DESENHO: RAFAEL CASSOL BASSO		DATA: MAI/20 / 2021	